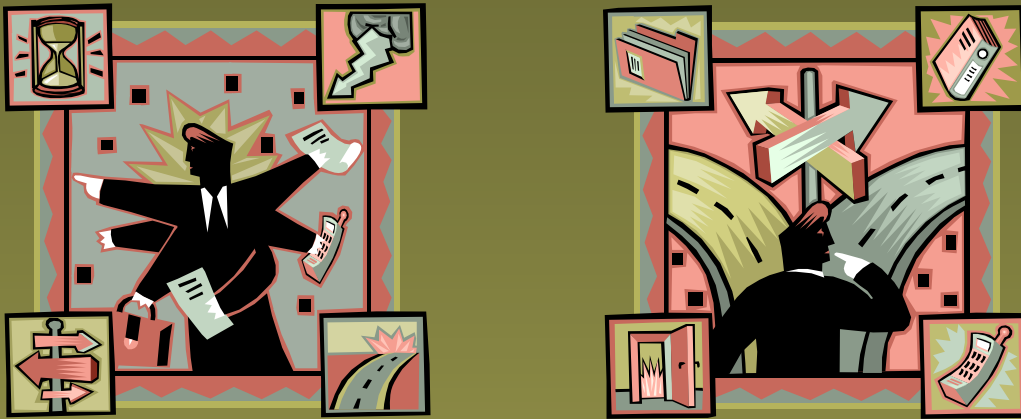


Prepare to Respond

Beyond the Day to Day

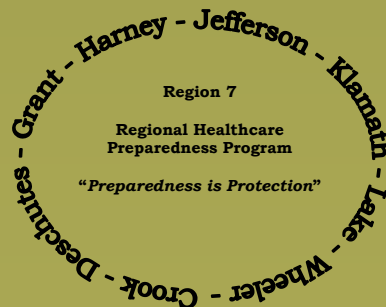


2009 PREPAREDNESS CONFERENCE
September 28th – 30th
Eagle Crest Resort
1522 Cline Falls Road
Redmond, OR 97756



Cascades East
AHEC

at St. Charles Medical Center



Cascade
HEALTHCARE COMMUNITY

Prepare to Respond—Beyond the Day to Day

In today's climate, the Oregon Hospital Preparedness Program (HPP) Region 7 in conjunction with Cascades East Area Health Education Center (CEAHEC) have identified the crucial need for this conference in helping you meet your state, federal and regulatory requirements.

This conference will provide educational, training and partnership opportunities along with implementation tools and processes that will allow an organization or an individual to increase their level of preparedness and response capabilities for medical surge and other large-scale events.

The educational objectives of the conference are to *foster, promote and encourage* activities which:

- ◆ Enhance collaboration among response partners through scenarios based training.
- ◆ Share best practices that can be incorporated in the planning, response and recovery stages of an event.
- ◆ Address the importance of recognizing and implementing incident priorities for every event (*life safety, critical infrastructure, community and environment*).

Monday 9/28/09	Tuesday 9/29/09	Wednesday 9/30/09
10 -12 Registration and Exhibitor Trade Show Noon Welcome lunch 12:45 Welcome session & Keynote Speaker: William Stanhope <i>Fallacies Around Surge... Are We Really Prepared?</i> 2:00 Concurrent sessions 5:00 Reception and Exhibitor Trade Show	8:00 Breakfast 8:30 General Session & Keynote Speaker: Dr. Alan P. Zelicoff <i>Technical Needs: The Absence of Real-Time Surveillance</i> 9:45 Concurrent Sessions Noon General Session, Lunch and Table Top Exercise 2:00 Concurrent sessions <i>Evening free</i>	7:00 Breakfast 8:00 Concurrent Sessions 9:00 Concurrent Sessions 10:00 Concurrent Sessions 11:00 Closing Session & Keynote Speaker Dr. Fredrick Cowie <i>Realistic Hometown Preparedness</i>

Noteworthy speakers and presenters will offer unique real life understanding about preparedness and *beyond*.

William D. Stanhope	Dr. Alan P. Zelicoff	Dr. Fredrick (Fred) Cowie Ph. D.
<p>Mr. Stanhope is the Associate Director for the Special Projects Center for the Institute for Biosecurity and Emerging Infections at St. Louis University School of Public Health in St. Louis, Missouri. William Stanhope is a Duke graduate and the recipient of national honors from the American Academy of Physician Assistants (AAPA); the Duke Distinguished Alumnus Award in University Physicians Assistance (PA) Education Division; and the Veteran's Caucus Award. In recognition of his contributions to the PA community in Oklahoma, the Dean of the Medical School endowed a scholarship in his name.</p>	<p>Alan P. Zelicoff is a physician, physicist, and senior scientist at Sandia National Laboratories, an engineering and science lab operated by Sandia Corporation for the US Department of Energy's National Nuclear Security Administration. Dr. Zelicoff's interests include risk and hazard analysis in hospital systems and office-based practice, and in technologies for improving the responsiveness of public health offices and countering biological weapons terrorism. The inventor of the Syndrome Reporting Information System for the rapid dissemination of disease information, he has written for <i>The Washington Post</i> and <i>The Wall Street Journal</i>. Dr. Zelicoff is the author of: "Microbe: Are we ready for the next Plague?" And his latest book is "More Harm than Good", a practical look at the reasons for costly medical practice in the United States.</p>	<p>Dr. Cowie, who likes to be called Fred, served for over ten years with the Disaster and Emergency Services Division of the State of Montana. Fred acted as Liaison to Indian Nations for Emergency Management, Liaison to Law Enforcement for Terrorism, HazMat Manager and Grants Manager. He coordinated the founding of and was Administrative Assistant for the State Emergency Response Commission (SERC).</p> <p>Fred also started and managed the Indian Nations HazMat Conference in conjunction with the Confederated Salish and Kootenai Tribes. He founded the Montana Terrorism Conference, as well as the Montana SERC Conference. Fred has acted as trainer and lecturer for many groups, including the NCAI, EPA, DOT, FEMA, RMIN, many Indian nations, states, fire departments, emergency management offices and professional organizations. In 2002-3 he designed the Montana Amber Alert System and developed and managed the Methamphetamine Conference for the Montana Division of Criminal Investigation. Fred, as a parent, was the keynote speaker for the Montana conference of disabled persons, their caregivers and their service providers.</p>

Early bird registration: Reduced rates if registering by July 15th. Additionally, tuition reduction and lodging scholarships are being offered to a limited number of qualifying HPP partners.

Don't miss this opportunity to connect with other industry professionals and preparedness partners. Fee includes registration, speakers, choice of sessions, meals and vendor fair. The conference begins on Monday at noon with a light lunch, welcome session and the first of a number of keynote speakers.

Prepare to Respond—Beyond the Day to Day

Register via **fax, on-line, e-mail, or mail by September 25th, 2009**

Space is limited. Conference may fill before September 25th.
You WILL NOT be considered registered until payment is received.

Conference Registration

Registration includes: * All concurrent & general sessions, * All conference materials, * Vendor Exhibits & Trade Show
* Networking reception Monday, September 28th, * Two lunches * Coffee & snacks during breaks and * Two breakfasts.

Please Print

Name: _____

Title/Position _____

Organization: _____

Address: _____

City/State/Postal Code: _____

E-mail: _____

Payment Information

(Make checks payable to: **Cascades East AHEC**)

Please identify payment (Check Visa MC AMEX Discover)

Credit Card # _____ - _____ - _____ Exp. Date _____

Signature _____

EV (CHC only)

COMPLETE and FAX, E-MAIL or MAIL check or credit card information to:

Fax: 541-706-6991 Mail: HPP Region 7, 2500 Neff Road, Bend, OR 97701-6015

For more information, E-mail Sasha Bronson at smbronson@cascadehealthcare.org or call 541-706-2617

Region 7 Hospital Preparedness Partners *(Operating within Crook, Deschutes, Grant, Harney, Jefferson, Klamath, Lake, Wheeler Counties)*

_____ \$100 By July 15th 2009 and within Region 7

_____ \$125 After July 15th 2009 and within Region 7

Participants operating outside of Region 7

_____ \$125 By July 15th 2009 and reside outside Region 7

_____ \$150 After July 15th 2009 and reside outside Region 7

Scholarship recipients reduced conference registration rates

_____ \$50 This year we have registration and lodging scholarships available. **For scholarship applications and eligibility information, visit our website at www.cascadeseast.org/education.html.** Contact us with questions at: 541-706-2631

Professional Role

- | | |
|--|--|
| <input type="checkbox"/> Public Health | <input type="checkbox"/> Paramedic |
| <input type="checkbox"/> Law Enforcement | <input type="checkbox"/> Doctor |
| <input type="checkbox"/> EMT/First Responder | <input type="checkbox"/> Fire |
| <input type="checkbox"/> Allied Health Professional | <input type="checkbox"/> Nurse |
| <input type="checkbox"/> Emergency Mgt. Professional | <input type="checkbox"/> Hospital Management |
| <input type="checkbox"/> Other: _____ | |

Check Any that Apply

- Speaker/committee member
 Special needs (e.g. dietary or disability) _____

Cancellation Policy

- Cancellation is allowed if Cascades East AHEC is notified:
* Prior to August 14 — full refund less a \$25 processing fee.
* Between August 15 - September 14 — 50% refunded, less a \$25 processing fee.
* After 9/14/09 are not refundable.
* Substitutions are allowed.

Location and Hotel Information

A block of rooms has been reserved at the Inn at Eagle Crest Resort. Rates are \$90 per night (plus tax). Please ask for the Preparedness Conference rate when making reservations. **Special rates are limited and only available through August 20, 2009.** Hotel rates will be extended for pre-conference and/or post conference stays at Eagle Crest Resort *if requested at the time of your reservation.*

Session Survey

Please tell us which sessions you might attend
(Choose one session for each time period)

Monday, September 28th

Session one Track 1 Track 2 Track 3

Tuesday, September 29th

Session one Track 1 Track 2 Track 3

Session two Track 1 Track 2 Track 3

Wednesday, September 30th

Session one Track 1 Track 2 Track 3

Session two Track 1 Track 2 Track 3

Session three Track 1 Track 2 Track 3

Prepare to Respond—Beyond the Day to Day

Sessions		
Track A	Track B	Track C
Mon. 09/28/09	Mon. 09/28/09	Mon. 09/28/09
MCI Triage Training	Drill Preparedness Training	How To Deal With The Media
Learn to develop and implement an initial action plan for the MCI scene: Describe & demonstrate proper size up of an MCI scene; describe & demonstrate proper triage techniques & isolation procedures; demonstrate the use of prioritized tag colors for triage identification; and demonstrate the proper communications procedures with Medical Control.	Training personnel will be shown the value of a well designed table top exercise and the class will develop and execute a practical portion to be utilized later in the conference.	Public Information personnel will get a chance to interact with media personalities and discuss the methods that create a professional and informative interview.
Tues. 09/29/09	Tues. 09/29/09	Tues. 09/29/09
How & When To Use Decontamination and Personal Protective Equipment	Hospital & Community Responses: Lessons Learned	Incident Management: Command or Coordinate?
Operational and administrative personnel will receive training and model procedures as well as suggested equipment selection to provide appropriate protection to workers during a Decontamination Operation. The focus of this session will be maximum interoperability between affected disciplines.	Real people, real responses. A multi-presenter format will take you through several real-world incidents and share processes for response, lessons learned and where those lessons have brought them today.	Personnel assigned to act as Incident Commanders (IC) or Command and General Staff at incidents within their organization will be able to interact with an experienced IC and discuss the methods that encourage teamwork and synergy among the incident's HICS Command and General Staff.
Disaster Burn Care	Using The HSEEP Tool Kit	So Now You're a Log (Logistic)
Caring for burn injuries and dealing with a mass casualty event that includes multiple burn injured patients. The Oregon Burn Surge plan will be covered and details on providing long term resuscitation and wound care for patients will be presented.	Training personnel will be lead through the HSEEP online exercise planning tool and given basic instruction on how to use it effectively. (Wireless laptop helpful, but not necessary.)	Personnel assigned to act as Logistics Chiefs at incidents within their organization will be exposed to the method used by the Federal Government and tricks of the trade from those who regularly perform the duties of ordering and tracking resources.
		PPE For Our first Responders—Are They Really Protected?
		Understand the need to change dispatch protocol.
Wed. 09/30/09	Wed. 09/30/09	Wed. 09/30/09
Managing The Incident	Hazard Vulnerability Analysis	Disaster & Response Recovery-Part I
Future and potential Operations Personnel will learn to develop leadership within themselves and action plans that will enable effective decision-making and execution of incident strategies for whatever situation unfolds.	Planners will be presented with pre-planning steps; they will see how to identify issues that will assist them when assigning their top planning priorities. They will be shown how to write the plan and be provided feedback for correction.	A business process-driven approach that takes a broad disaster recovery perspective whereby organizations plan for recovery of the entire business operation. This session will define the process, describe best practices, and discuss regulatory requirements.
Table Top Exercise: An Unusual (And Unusually Severe) Outbreak —Part I	Plan Writing Evaluation 101	Disaster & Response Recovery-Part II
Timely diagnosis and response for a disease outbreak. Appreciate the importance of real time surveillance.	In this session, planners and administration will see the value of a well written plan and all of its components. They will see how to assess their plan and develop actions to ensure that the "how to, who to and where" functions are identified and prioritized.	A technology driven-process approach where procedures are implemented to ensure the effective maintenance of critical IT systems, applications, and data. This session will define the process, describe best practices, and discuss regulatory requirements.
Modern Lessons From An Old Outbreak—Part II	Pandemic Planning	Grant Writing
Situational awareness and how it relates to today.	A global pandemic outbreak represents one of the most catastrophic threats to the U.S. public health system. This session will address the effects of a pandemic on several entities including responders, public health partners and community systems.	Examine the process of grant writing and the criteria and standards used by funders to evaluate grant applications.

Prepare to Respond—Beyond the Day to Day

Eagle Crest Resort offers golf, hiking, biking, fitness facilities, three outdoor and one indoor swimming pool, a business center, wireless internet and a number of dining facilities. Room rates can be extended pre-conference and post conference.

To make reservations go to www.eagle-crest.com or call 888-306-9643



1522 Cline Falls Rd.
Redmond, OR 97756
For reservations call: 800-682-4786
www.eagle-crest.com



Directions from the South:

From Klamath Falls, take Highway 97 North to Bend.

At the north end of Bend take Highway 20 west toward Sisters. Follow this approximately five miles to Tumalo.

Right on Cline Falls Road (also called Cook Avenue). Follow this for approximately nine miles to the resort entrance.

Turn right into the resort and proceed to the hotel front desk for check in.

Directions from the North:

I-205 South. In a short distance you will exit onto I-84 East. From I-84 take exit #16, turn right (south) and travel approximately four miles. Turn left onto Highway 26, which will take you over Mt. Hood and into Madras.

In Madras, you join up with Highway 97 going south. Follow this road into Redmond.

At the south end of Redmond, take a right turn onto Highway 126 (west) toward Sisters.

Travel approximately five miles, follow the signs to Eagle Crest Resort, and turn right onto Cline Falls Road and loop back over the overpass.

The Resort is one mile south on Cline Falls Road.

Directions from the West:

From I-5 you can take exits at Eugene (Highway 126 East), Albany (Highway 20 East) or Salem (Highway 22 East). All of these roads will lead you to Sisters. As you are leaving Sisters, turn left onto Highway 126 toward Redmond and continue for approximately 14 miles. Turn right on Cline Falls Highway just before an overpass and right again at the stop sign. Follow Cline Falls Road south one mile.

Directions from the East:

Traveling on Highway 20 west, proceed to Bend. Turn right at Highway 97 and at the north end of Bend, take Highway 20 West toward Sisters. Follow this approximately five miles to Tumalo, where you will take a right on Cline Falls Road (also called Cook Avenue). Follow this for approximately nine miles to the resort entrance. Turn right and proceed to the hotel front desk for check in.

Stay and Play in Central Oregon

Central Oregon hosts a multitude of events and performances. There are endless things to do before or after the conference. Hotel rates will be extended for pre-conference and/or post conference stays at Eagle Crest Resort *if requested at the time of your reservation*.

Here are some events to consider:

- ◆ **High Desert Museum:** Located at 59800 South Highway 97.
A magical place for children and adults alike. <http://www.highdesertmuseum.org/>
- ◆ **Saturday-Sunday September 26-27: Oktoberfest 2009**
Activities for everyone - Celebrity Yodeling Contest, Hammer Schlager, Weiner Dog Races. Fun Kids area with puppet show and face painting, until 6pm on Saturday. Traditional German Food, lots of brews from local breweries, live traditional music and dancing.
9/26 6pm - 10 pm, 9/27 12pm - 10pm
- ◆ **Friday-Sunday September 25-27: Sisters in Sisters ~ Celebrating Family & Friends**
Annual Sisters in Sisters celebration. Round up your sister, your mom, your best friend, and enjoy a casual weekend of foot-stomping fun and special memories. Nationally recognized sister celebrities, speakers, fun activities and much more. Sponsor: Sisters Area Chamber of Commerce- Contact: (541) 549.0251 or <http://www.sistersinsisters.com/>
- ◆ **Saturday-Thursday September 26 - October 1: Pacific Amateur Golf Classic**
Approximately 700 players are expected for the 12th year of this event. The multi-day Classic consists of daily tournament play at courses throughout the region including Sunriver, Eagle Crest Resort, Aspen Lakes Golf Courses and more. Visit www.pacamgolf.com/ for more information
- ◆ **Wednesday, September 30:**
<http://www.bendfarmersmarket.us/index.html>
10AM-4PM each Wednesday, on the top of Mirror Pond at Drake Park (Wall Street/Franklin) in Downtown Bend.
(541) 420-9015.
- ◆ **For more information, visit these websites:**
<http://www.visitcentraloregon.com/calendar.html>, www.visitbend.com

Prepare to Respond Beyond the Day to Day

2009 Preparedness Conference

September 28th – 30th

TUITION SCHOLARSHIP REIMBURSEMENT REQUEST

DUE BY September 14th**

Cascades East AHEC is offering tuition reductions (scholarships) and travel reimbursement for professional healthcare participants who live or work in the counties of Crook, Deschutes, Jefferson, Klamath, Grant, Harney, Lake, Wheeler, and the Confederated Tribes of Warm Springs Territory. For questions about scholarships please call us at (541) 706-2631.

Details: Approved scholarship recipients are eligible for reduced conference registration fee of \$50, and one night's lodging (up to \$100). No lodging is available for communities within 40 miles of conference location.. You must fill out a conference registration form, scholarship application and pay your registration fee portion prior to September 14, 2009 to reserve your scholarship slot. If all slots are not taken by September 14th, this deadline may be extended. However, if we have not received your registration payment by September 14th, slots will be given to those who may be on the waiting list. **Priority** will be given based on criteria developed by the Cascades East AHEC/HPP Region 7 staff—we are happy to answer any questions you might have about priorities by e-mail or phone. Should we have any questions about your application we will contact you directly.

APPLICATION FOR CONFERENCE TUITION SCHOLARSHIP AND TRAVEL REIMBURSEMENT:

CHECK ALL THAT APPLY:

- Yes**, I want a **tuition reduction scholarship** to enable me to participate in the September 28th – 30th conference.
- Yes**, I will be traveling from a community greater than 40 miles away and want to reimbursement for one night's **lodging** (up to \$100/night) to enable me to participate. Participant is responsible for making room reservations and submitting reimbursement by 10/15/09.
- Yes**, I am currently living and/or working in one or more of the communities identified for eligibility.

Name _____ Title _____

Profession _____ Job Role _____

Address _____ Home Phone _____ Cell Phone _____

City _____ Zip _____ County _____

Agency/Employer _____ County _____

Work Phone _____ E-mail _____

Return to: Cascades East AHEC at St Charles Medical Center, 2500 NE Neff Road, Bend, Oregon, 97701
Fax # 541-706-6991, or send completed or inquiries to snbronson@cascadehealthcare.org (541-706-2617)

**Scholarships may be available after 9/14/09 based on funds that are remaining.